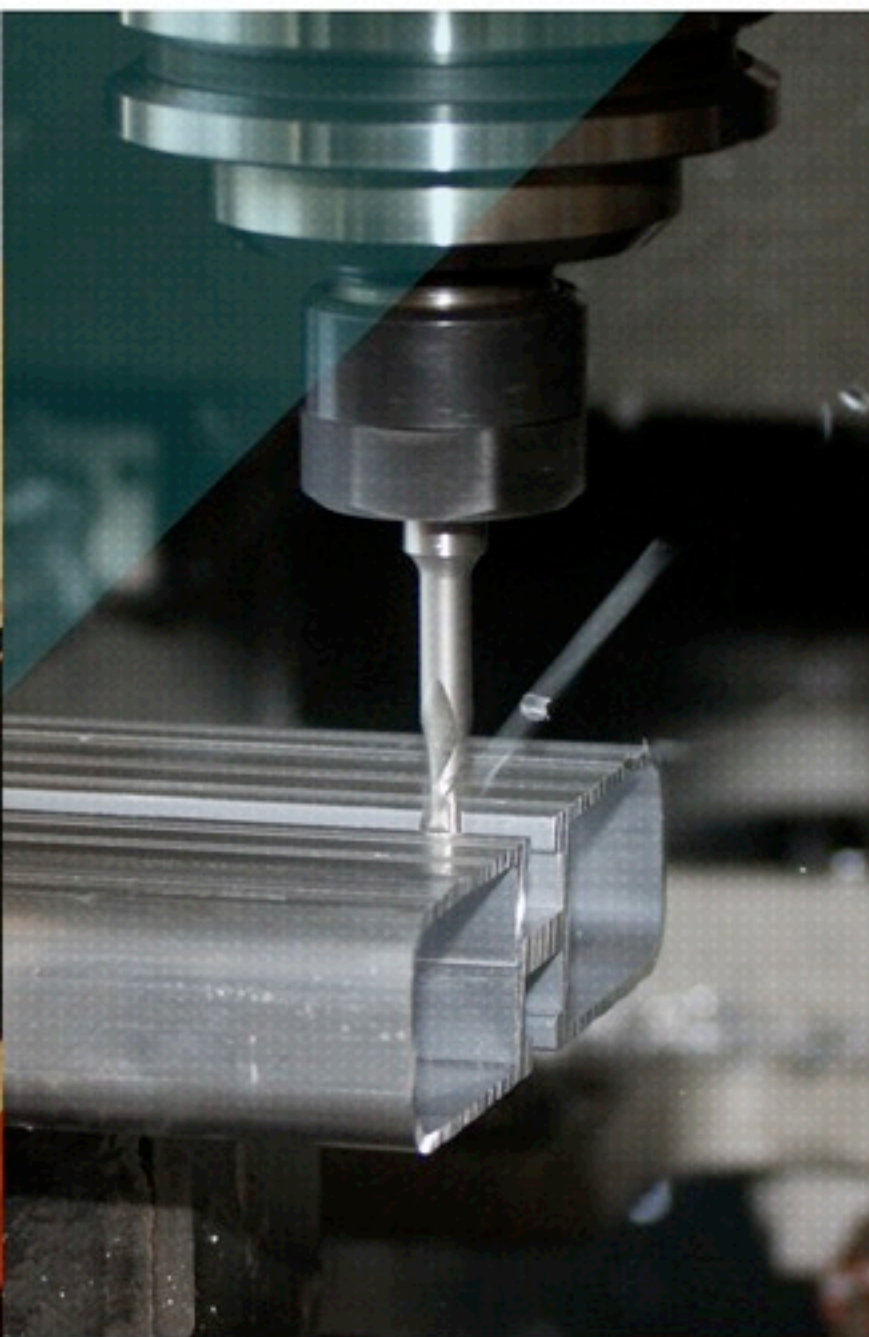


SOME PEOPLE GET POSTCARDS. OTHERS GO LIVE THEM.



AFRICA PROVEN ADVENTURE GEAR FOR VEHICLES AND MORE.





BORN AND RAISED IN AFRICA, PROVEN AND TRUSTED AROUND THE WORLD.

Recipe for Front Runner:

- ① Take a handful of friends who are engineers, designers, outdoor enthusiasts and professional off-road drivers;
- ② Add a shared history of adventures into the wilds of Africa spanning 40 years;
- ③ Toss them into a factory in South Africa with the very latest technology and materials, together with CAD (Computer Aided Design), in-house laser cutting, CNC milling, bending, punching and powder coating;
- ④ Let them simmer, dream, design, build, test, sell, travel, and evolve for 13 years, as they grow to become the world's premiere vehicle outfitting company with offices in South Africa, Australia, Europe and the United States.

Makes: Roof Racks, Roof Rack Accessories, Camping Gear, Storage Systems, Fuel Tanks, Water Solutions, Bumpers, and More.

Best served at sunset. In nature. Where the air is fresh and the views are breathtaking.





THE SLIMLINE II TAKES IT TO A WHOLE NEW LEVEL.

On August 24th, 2012 at 5:07pm, we suspended this Jeep from a crane using only the Slimline II.

Not something you might try with any other rack on the market today, but that is precisely why we needed to make it. Factor in a vast selection of perfectly integrated accessories and mounts, and you will not only have a new gold standard in adventure gear, you'll have the Slimline II.

WE SET OUT TO MAKE THE STRONGEST AND MOST VERSATILE ROOF RACK EVER. WE ALSO DECIDED IT WOULDN'T HURT IF IT WAS NICE TO LOOK AT.

SLIMLINE II IS STRONG:

- Designed and built specifically for off-road use.
- Rated to carry up to 300kg/660 lbs*
- Will withstand the stress of any adventure.

* Always load rack in accordance with the vehicle's load rating specifications.

SLIMLINE II IS LIGHTWIEGHT:

- Manufactured entirely of high density aluminum.
- Withstands greater stresses than the best all-steel roof rack at 1/3rd less the weight.
- Patented design offers the best strength to weight ratio of any roof rack.

SLIMLINE II IS LOW PROFILE:

- T-slot mounting system makes "basket style" side rails obsolete.
- Unobtrusive flat deck compliments the lines of today's automobiles.
- Decreased wind resistance and noise means increased vehicle performance.

SLIMLINE II IS DURABLE:

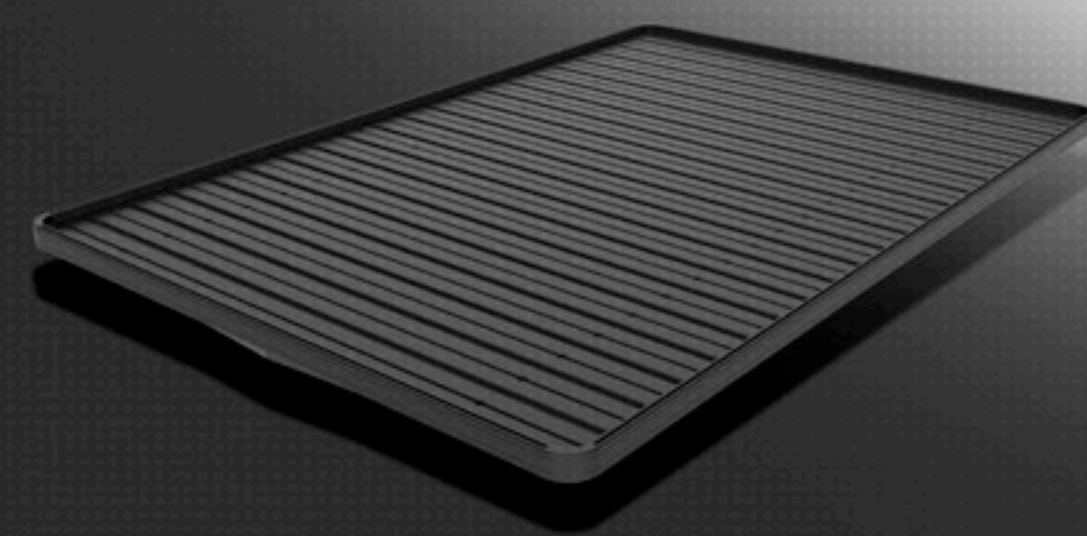
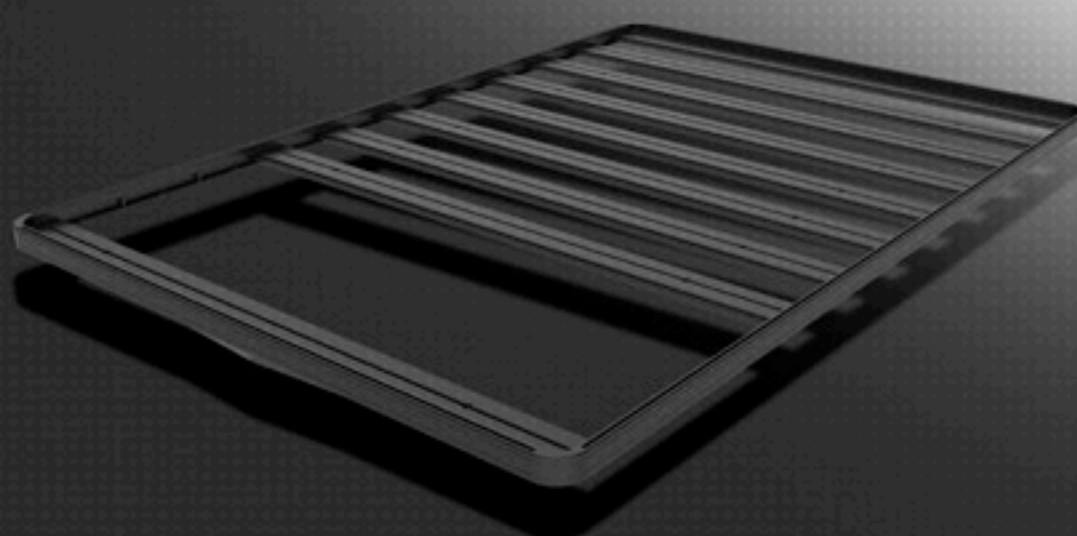
- Manufactured entirely with corrosion free aluminum and **will not rust**.
- All aluminum or stainless steel vehicle mounting solutions.
- Weather resistant powder coating formulated for exterior use far exceeds industry standards.
- Backed by a Lifetime Warranty.

SLIMLINE II IS MODULAR:

- Complete roof rack design flexibility and available in 55 sizes.
- Add slats to create a solid platform for sleeping and/or sitting.
- Remove slats to create unobstructed t-top or sun roof access.
- Easily convert rack lengths by purchasing new side rails.
- Create the classic roof rack basket shape with optional Expedition Rails.

SLIMLINE II IS VERSATILE:

- Unique bolt on system offers easy on and off mounting for any type of adventure gear.
- Independently secure loads anywhere on the top, sides, or bottom of the rack.
- Limitless possibilities to customize the arrangement of over 25 Front Runner roof rack accessories.



ANY VEHICLE. ANY MODEL. ANY YEAR. FRONT RUNNER HAS A ROOF RACK SOLUTION.



The Slimline II comes in 55 sizes with 5 different vehicle mounting options.

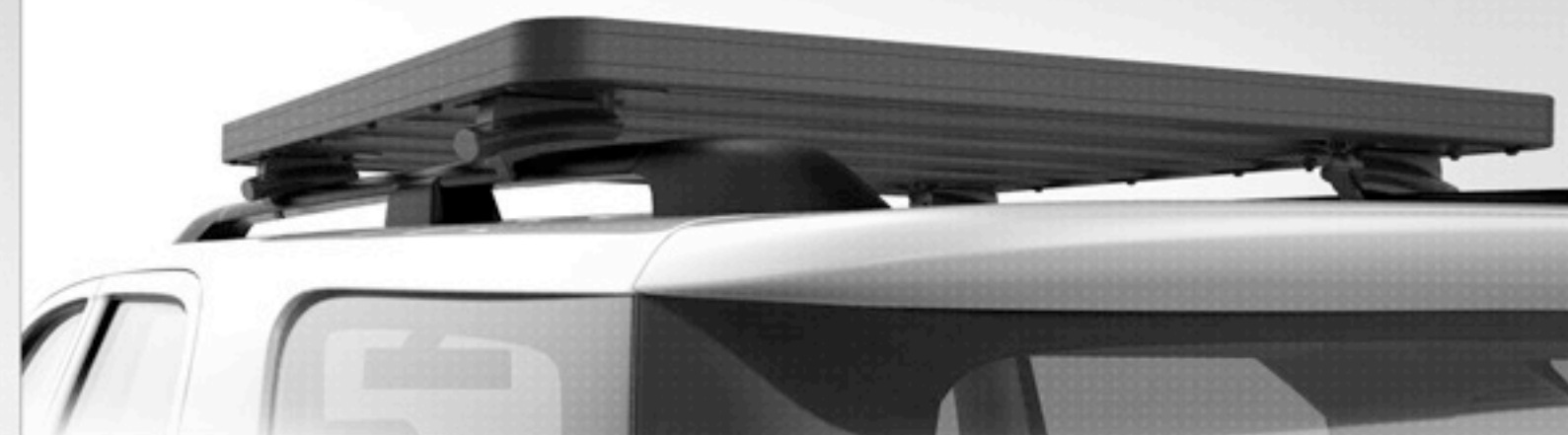
TRACK MOUNTED FEET:

- Available in 5 heights ranging from 40mm to 75mm, the adjustable feet bridge the gap between vehicle mounted track and the Slimline II tray.
- Track is available in a wide range of vehicle specific lengths and contours.



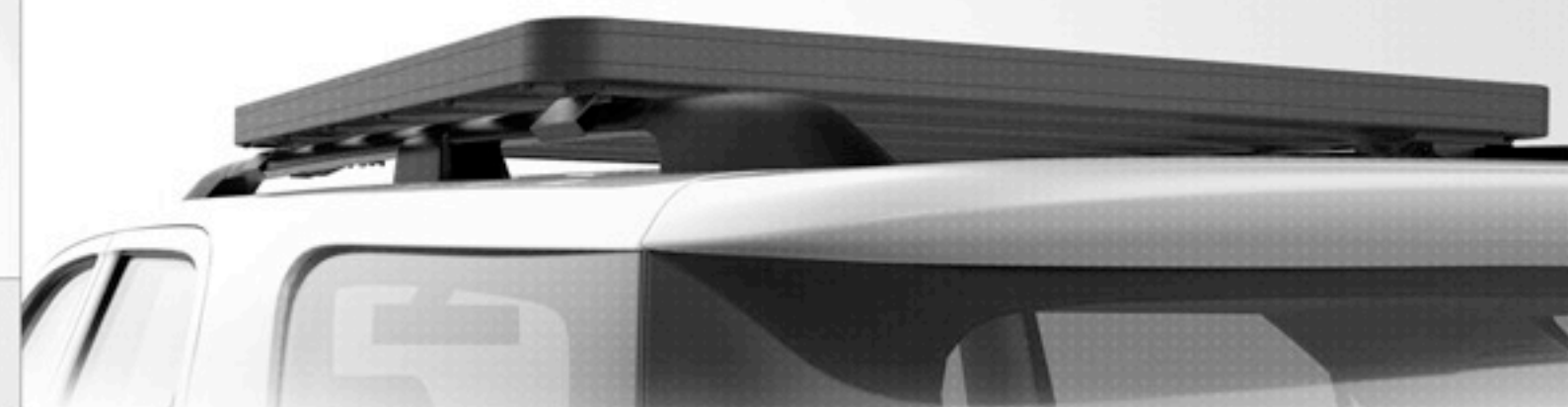
UNIVERSAL GRAB-ON FEET:

- Allows mounting to any vehicle with factory roof rails.



EXTREME GRAB-ON:

- An off-road rated universal foot that mounts to most factory roof rails.



GUTTER MOUNTED LEGS:

- The name says it all. Fits any vehicle with rain gutters.
- Available in 11 heights ranging from 120mm to 290mm.



VEHICLE MOUNTED FEET:

- Vehicle specific custom feet mount directly to specific Toyotas, Jeeps and Land Rovers.



Hi-Lift Jack Mount



Double Jerry Can Holder



Potjie Pot Holder



Under Rack Storage Slides



ACCESSORIES FOR ANY OCCASION. PLANNED OR OTHERWISE.

Front Runner offers roof top solutions for securing water, fuel, tents, bikes, skis, braai* grills, fishing rods, surfboards, axes, recovery jacks, spades*, bottle openers, clothes, kayaks, lights, tables, gas*, rescue tracks, spare tyres*, suitcases, potjie pots*, chairs, snowboards and more.

**For you Americans, that's BBQ, shovels, propane, tires and cast iron pots. You read that correct. Cast iron pots.*



Bottle Opener



Universal "Book End" Brackets

Universal Transit Bag



Bicycle Mount



Kayak Mount



Spare Wheel Clamp



Universal Gas Bottle Holder



Stratchits



Ski & Snowboard Holder




Tie-Down Rings




Shovel Mount



Axe Mount

A white Toyota Land Cruiser is parked in a savanna landscape at sunset. The vehicle is equipped with a rooftop tent and a large awning. A small table and chairs are set up under the awning. The sky is filled with colorful clouds, and a large tree stands behind the vehicle.

HOME IS WHERE YOU MAKE IT.

A small logo consisting of a series of parallel diagonal lines in rainbow colors.

Front Runner adventure gear will get you there and back again.





Stainless Steel Camp Table



Stainless Steel Prep Table w/ Wash Basin

Feather-Lite Roof Top Tent



Wolf Pack Box



Expander Folding Chair

BEING PREPARED IS THE ULTIMATE LUXURY.

Front Runner offers extremely strong and lightweight organizing and living systems for any automobile based adventure. Our products are built to be used both on-road and off-road while providing the ultimate in camping comfort and convenience.



Vehicle Safe



Wheel Step



Fridge Slider



Flat Pack Kitchenware Set


Sand Lizard Rescue Trax




Camp BBQ Grill



Hi-Lift Jack Base Plate



**WATER IS SOMETHING YOU EITHER GET RIGHT,
OR VERY, VERY WRONG. DO IT RIGHT.**



Never sweat your water supply again with Front Runner water storage solutions.



20L Plastic Jerry Can w/ Tap



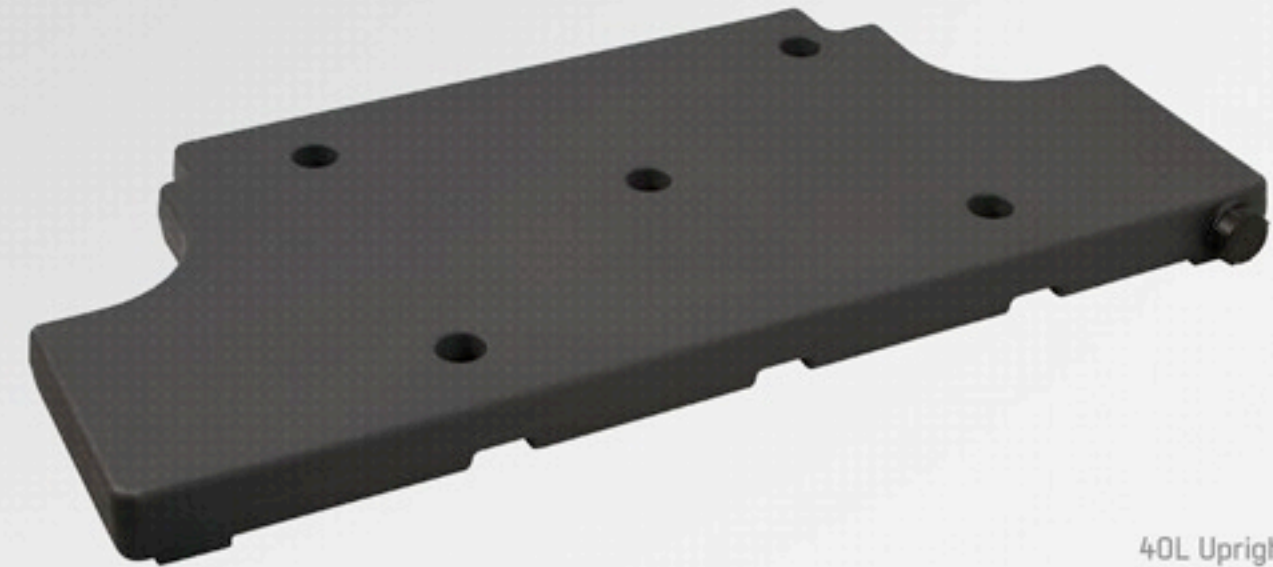
20L Plastic Jerry Can



27L Water Bladder w/ Liner



40L Footwell Water Tank

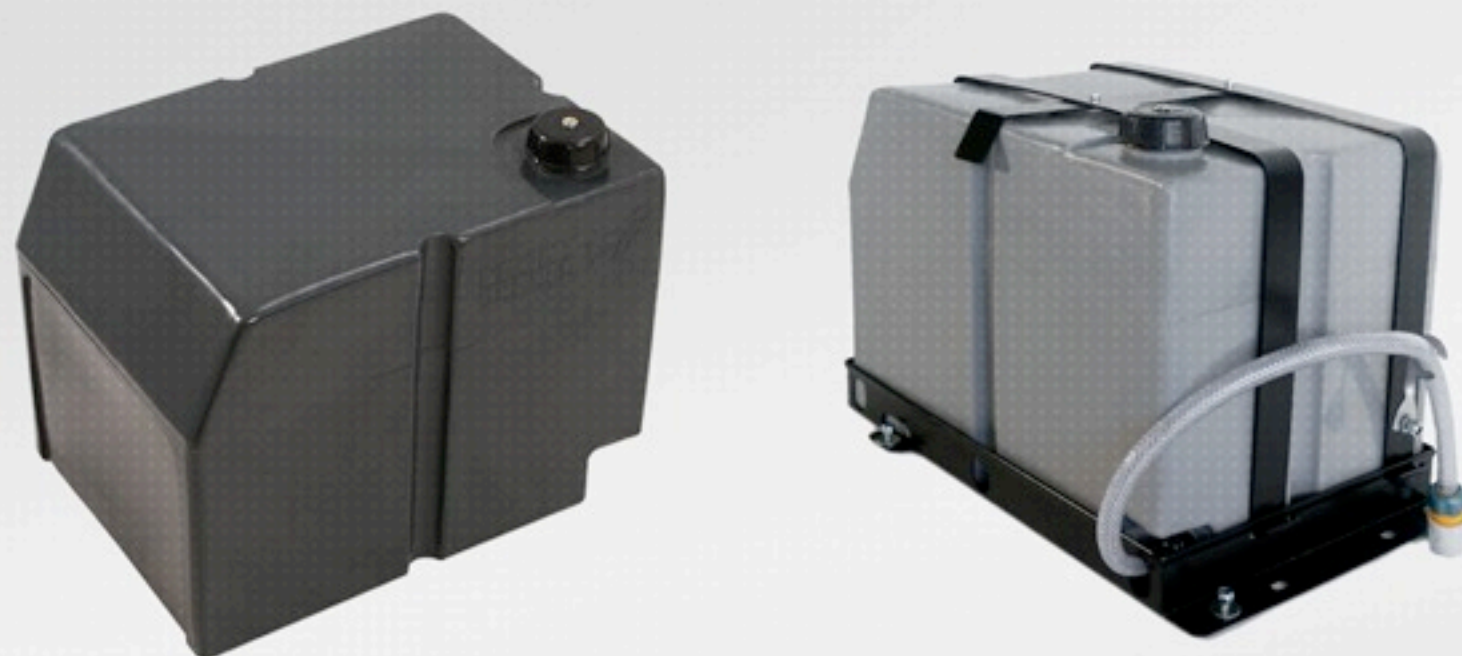


40L Upright Flat Water Tank

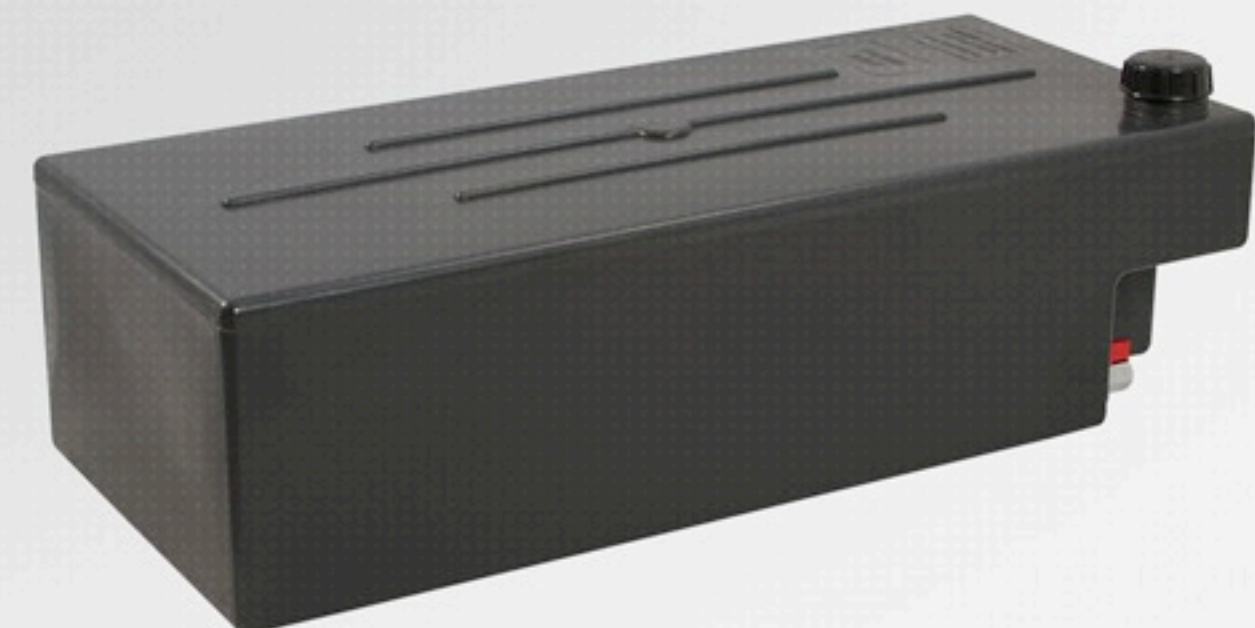
WATER CARRYING SOLUTIONS THAT WOULD MAKE A CAMEL BLUSH.

Our tanks can fit inconspicuously behind seats, behind wheel wells, on footwells, or mounted to the roof rack. We offer vehicle specific tanks as well as universal tanks.

50L Slanted Water Tank

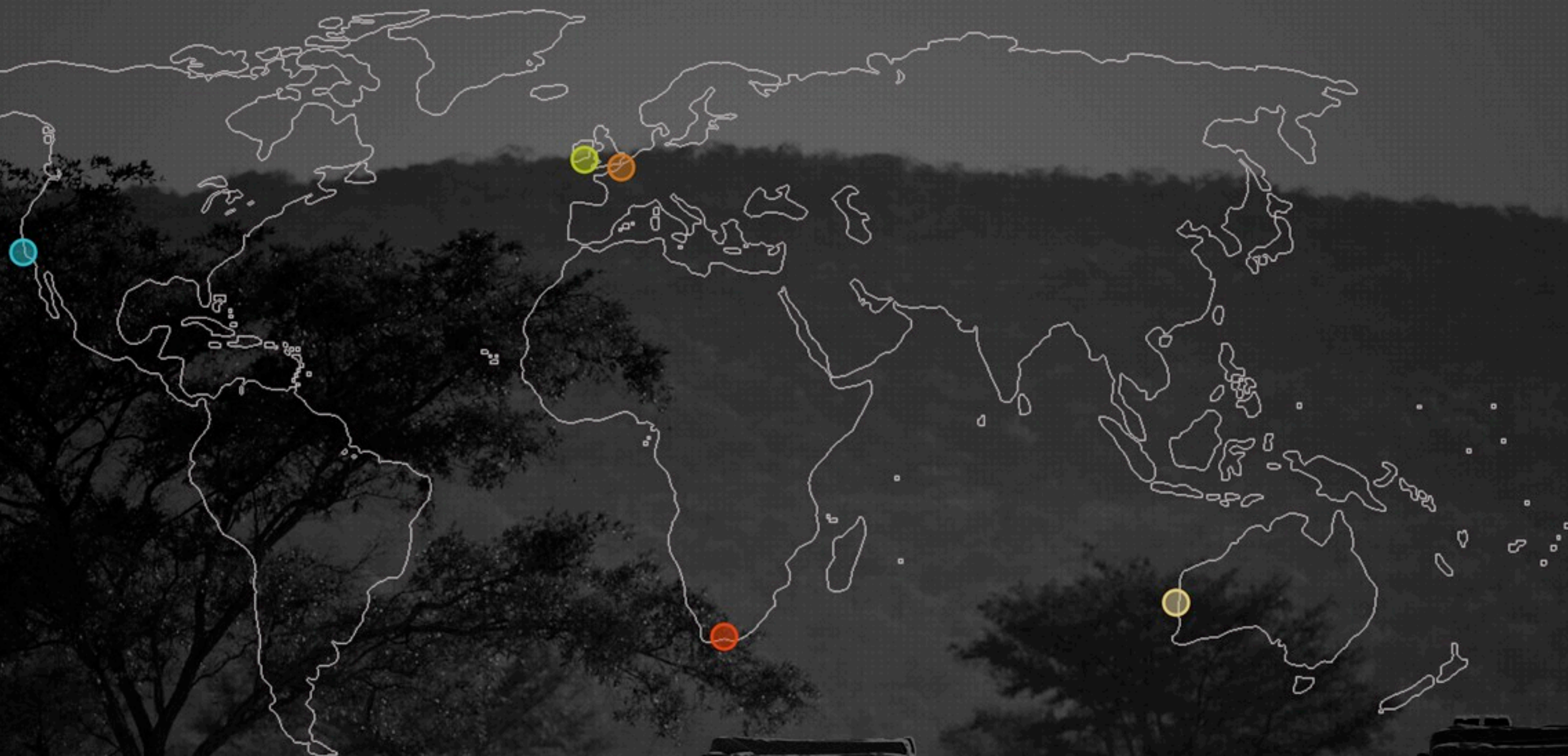


40L Rack Mountable Water Tank



67L Water Tank

BORN IN AFRICA, PROVEN THE WORLD OVER.



FRONT RUNNER SOUTH AFRICA:

1 Forssman Close
Barbeque Downs
Kyalami - Johannesburg
South Africa

TEL: +27 87.310.1761
TEL: +27 11.466.0155
FAX: +27 11.466.0136

info@frontrunner.co.za

www.frontrunner.co.za

FRONT RUNNER USA:

111 East Cedar Ave
Unit 101
Burbank, California 91502
USA

TEL: +1 818.253.1322
TOLL FREE: +1 866.840.0321

info@frontrunneroutfitters.com

www.frontrunneroutfitters.com

FRONT RUNNER EUROPE:

Allmakes 4x4
39 Milton Park
Abingdon
Oxon, OX14 4RT
United Kingdom

TEL: +44 (0)1235.821122

frontrunner@allmakes.uk.co

www.allmakes4x4.com

FRONT RUNNER EUROPE:

Hoeikenstraat 19 Unit 3
2830 Willebroek
Belgium

TEL: +32 (0)495.283747

rudi@frontrunner.co.za

FRONT RUNNER AUSTRALIA:

Dolium Pty Ltd
2/248 Welshpool Road
Welshpool
Western Australia 6106

TEL: +61 8.9395.2575

info@dolium.com.au

www.dolium.com.au



BREAKAWAY.

 **FRONT
RUNNER**